

HOLO-KROME®

WHEN IT MATTERS MOST



Critical Application Socket Head Fasteners

Available in Metric
and Inch Sizes



WHEN FAILURE IS NOT AN OPTION

A Proud History of Quality Since 1929

For more than 80 years, Holo-Krome has been a leader in socket screw development and innovation – from our patented Thermo-Forging techniques to Holo-Code and now country of origin traceability. Holo-Krome socket screws are manufactured in the USA and meet and exceed all applicable International standards. The Holo-Krome production philosophy is to ensure that our customers – OEM, MRO, and design engineers – always receive the correct product to meet their exacting requirements.

Holo-Code® Traceability

Holo-Krome was the first to introduce the Holo-Code system in Europe. This alphanumeric code is rolled into the head diameter to provide full product traceability – from raw material heat number to packing information. To create the Holo-Code, each operation is monitored, and information is carefully stored for each batch number. As the Holo-Code is produced on the circumference of the head it remains virtually free from damage during its service life. The Holo-Code position also does not affect the aesthetics of the socket face.

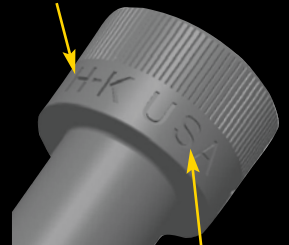
Country of Origin

Holo-Krome is also the first to denote country of origin (CoO) on their socket head cap screws (SHCS). This information is clearly visible around the head diameter. Other manufacturers publish CoO on the box but may not truly indicate the CoO. In fact, some socket head cap screws are headed in one continent and finished and packed in another! What is the “country of origin” where the majority cost of processing takes place? Holo-Krome is proud to put *Made in USA* on our Socket Head Cap Screws.

How Often Do You Get SAE and Metric Mixed Up?

With Holo-Krome SHCS – from M2.5 - M36 and 0-80 - 1-1/2" – there is no doubt. Each SHCS has the thread diameter clearly printed around the circumference of the head.

“H-K” MARKING



MADE IN “USA”
MARKING

CHAMFERED
DRIVE



SIZE MARKING

HOLO-CODE®
TRACEABILITY



LONGER AND
DEEPER KNURLS



www.holo-krome.com

HOLO-KROME® PRODUCTS

Whenever fasteners are called for to perform their basic function of fastening metal parts securely, at the same time permitting separation of the parts in the event of repairs, replacements or adjustments, there is a style and size of Holo-Krome products to do the job more easily, more quickly, and more dependably – at a lower cost in the long run.



CAP SCREWS

Socket Head • Button Head • Flat Head • Low Head

- Socket Head Caps are also available in stainless steel
- Manufactured using alloy steel
- Available in Metric and Inch sizes



DOWEL PINS

Standard • Oversize • Pull

- Standard and .001" oversize are heat treated to a core hardness of HRC 47-58
- Standard available in Metric and Inch sizes



SOCKET SHOULDER SCREWS

- Holo-Krome step grinds shoulder and roll thread diameter in one operation after heat treatment to assure concentricity.
- Available in Metric and Inch sizes



JAM SCREWS

- Available in Inch sizes only



SOCKET PRESSURE PLUGS

- Holo-Krome Dry Seal Socket Pressure Plugs are made from high alloy steel
- Close tolerance control prevents spiral leakage
- Brass flush Socket Pressure Plugs are available
- Stainless Steel Plugs are available in selected sizes



SET SCREWS

Cup Point

- Holo-Krome Cup Point Socket Set Screws provide maximal axial, torsional and vibrational holding power and long life.
- Available in Metric and Inch sizes

SPECIALTY PARTS

- **Engineered Cold Formed Specials**

- Specialty materials:

17-4 S/S
A286
B7
B8
B8M



Ask your representative for details!

THE HOLO-KROME® PRODUCT ADVANTAGE

Quality: Through superior cold forming expertise and proprietary processing, Holo-Krome offers socket heads that better withstand the rigors of heavy industrial and critical application.

Consistency: Every socket head is manufactured using consistent processes and superior engineered specifications.

Product Features: Holo-Krome socket heads offer user friendly and cost-saving design features. For example, all cap screws and set screws offer Easy-Entry chamfering, making hex key insertion easy for faster equipment assembly.

- **ISO 9001-2008 Certified**
- **QSLM Class 2 Approved**
- **Holo-Code Traceability**
- **DFARS Compliant**
- **Limited raw material suppliers to ensure the right chemistry**
- **REACH Compliant**
- **ROHS Compliant**



Holo-Krome Europe Ltd.
Kingsway Park
Kingsway West
Dundee, Scotland DD2 4TD
Telephone: +44 (0) 1382 614 470
Fax: +44 (0) 1382 614 487
www.holo-krome.com

